

Harrisville Borough

117 South Main Street
P.O. Box 388
Harrisville, PA 16038
(724) 735-2222 - Phone
(724) 735-0195 - Fax

Specifications For Sanitary Sewer Service Line Installation

PA One-Call must be contacted at 1-800-242-1776 prior to excavation beginning

General Harrisville Borough Sanitary Service Guidelines:

1. All applications must be completed, signed and any applicable fees paid prior to new service being approved – an original sealed survey is required for a tap servicing a newly constructed structure.
2. Any PA Department of Environmental Protection (PADEP) and other state and local permits must be completed and approved prior to the new service being installed.
3. Only property owners may apply for new service which requires a tap to be constructed.
4. Multi-Unit Residential & Non-Residential applicants are required to meet with the Borough and the Borough's Engineer prior to service approval.
5. All sanitary waste lines including but not limited to toilets, laundry facilities, sinks, dishwashers and any other source of gray water shall be connected into the public wastewater system.
6. No storm water, roof conductors, foundation (French) drains, driveway drains, sump pumps, nor any source of ground or surface water whatsoever is permitted to enter the sewage service line. The inspection port will be used to periodically verify that water influenced from these sources does not exist and that they are not contributing to additional flow to the Borough's sewer system.
7. The Borough will not make a connection from the tap to a service line.
8. Service lines are to be constructed only on the property of the residence or structure being serviced.
9. All work is to be done in compliance with the Borough's **Rules and Regulations** and any other local, State or Federal laws.

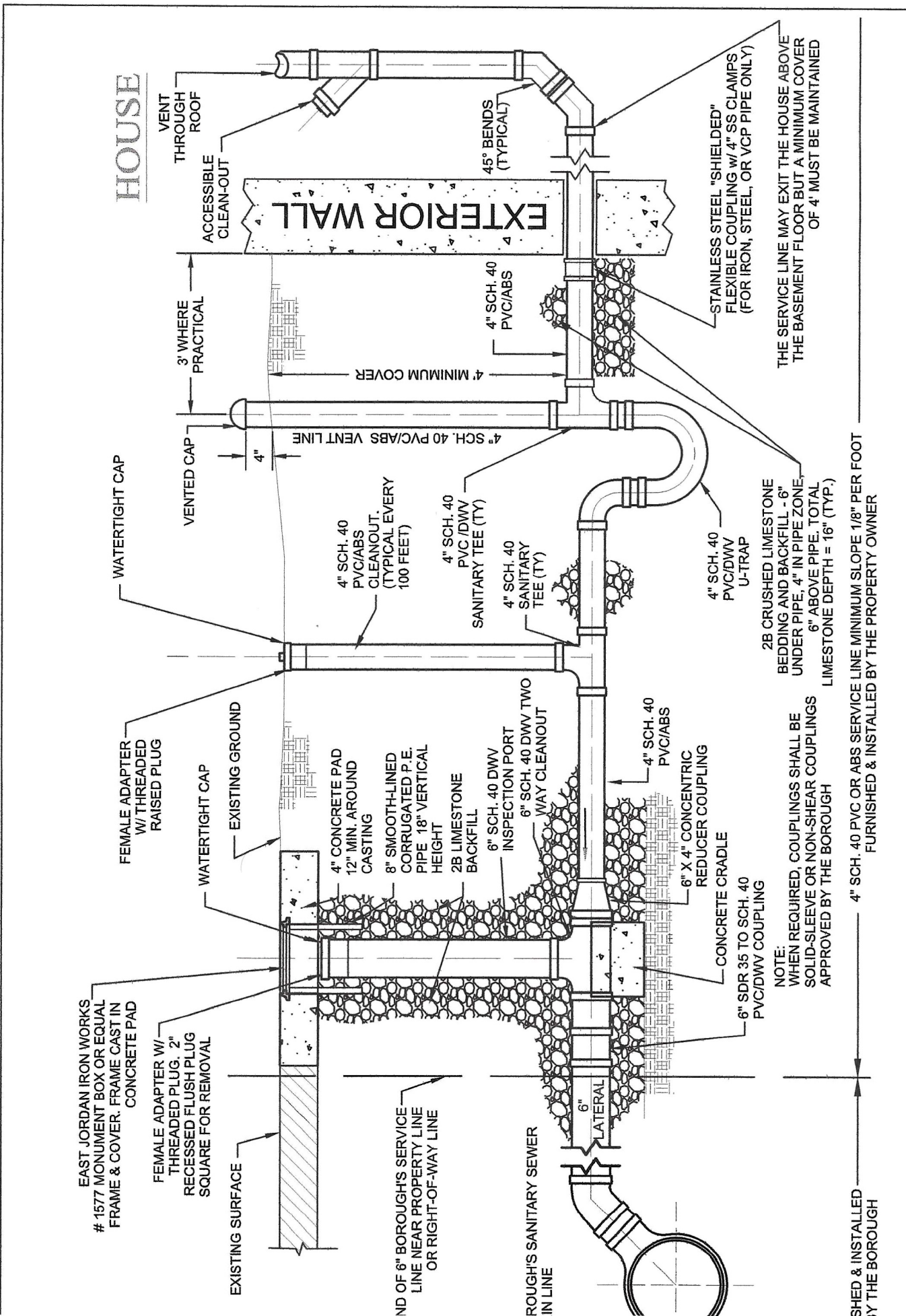
Technical Sanitary Service Specifications:

1. A newly constructed service line shall be required from the exterior building wall to the tap-in connection provided, and an inspection by a Borough's representative will be performed. The Borough reserves the right to grant partial waivers of this requirement under exceptional conditions or circumstances.
2. No service line is to be covered until inspected from the exterior wall of the building to the tap-in connection with the six (6) inches of 2B crushed limestone bedding underneath the service line installed but no backfill covering the pipe. After the inspection has been

approved by a representative of Borough, the remainder of the 2B crushed limestone shall be backfilled in the pipe zone and above the pipe. **NOTE**; other agencies may require additional inspections – please contact your municipality for more information.

3. Initial inspection is included in the tap-in fee. A re-inspection, if required, is charged according to the Borough's Fee Resolution.
4. Service lines are to be four (4) inches in diameter minimum and designed to maintain a minimum one-eighth (1/8) unit vertical to twelve (12) unit horizontal.
5. The service line pipe shall not be reduced in size in the direction of flow.
6. A house trap and vent stack are required within three (3) feet outside of the building wall. **The line from the exterior wall up to and including the trap is to be constructed of Schedule 40 pipe and fittings.**
7. A shielded flexible coupling may be used in some cases when the use of a solid coupling or adapter is impossible to connect the existing sanitary house drain line to the newly constructed service line. **The use of flexible couplers is prohibited when constructing the remainder of the service line.** Refer to the attached drawing for acceptable fittings at various connection points.
8. A cleanout shall be installed at no greater than one hundred (100) foot increments apart on the service line (starting measurement from the exterior vent stack which will be accepted as a cleanout) and at each fitting with a change of direction greater than 45 degrees.
9. No single fitting greater than a 45-degree elbow is permitted on the service line except in the construction of the house trap. Change in direction greater than 45-degrees are to be accomplished with the use of two fittings and a minimum 12" section of pipe between.
10. A 6" tap is provided by the Borough for service line connection (see attached drawing).
11. New service lines and fittings from the house trap to the tap connection shall be constructed using **SDR-35** pipe with an elastometric gasket or **Schedule 40 PVC / ABS DWV** pipe. All joints shall be tightly fitted to prevent infiltration and installed in accordance with manufacturer's specifications.
12. Each property owner shall be required to construct an inspection port at the point of connection to the Borough's main line lateral (see attached drawing). The Borough will use the inspection port to ensure compliance with the Borough's **Rules and Regulations**. **The Borough shall conduct an inspection port review on your property within 90 days of the initial service line inspection approval date to verify the proper construction of the inspection port.**
13. The service line shall be installed with six (6) inches of **2B crushed limestone** as bedding under the pipe, four (4) inches of **2B crushed limestone** in the pipe zone and six (6) inches of **2B crushed limestone** as backfill above the pipe to provide support and protection. Slag, pea gravel or modified materials are not considered suitable bedding or backfill. Excavated materials can be used for remaining backfill provided that no large chunks of earth, construction debris or large rocks are placed in the trench.

These guidelines are intended to represent the specifications of the Borough of Harrisville. You may be required to meet additional Municipal or State requirements. Please contact your local municipality for more information.



DRAWING NOT TO SCALE

DRAWN BY: JDH
 DATE: FEB. 2025
 CHECKED BY: ZRS

SANITARY SEWER TAP TYPICAL DOMESTIC INSTALLATION SCHEDULE 40 PVC OR ABS LATERAL

ARRISVILLE BOROUGH
 7 SOUTH MAIN STREET
 PO BOX 388
 ARRISVILLE, PA 16038
 (724) 735-2222

SHED & INSTALLED BY THE BOROUGH

THE SERVICE LINE MAY EXIT THE HOUSE ABOVE THE BASEMENT FLOOR BUT A MINIMUM COVER OF 4' MUST BE MAINTAINED

4" SCH. 40 PVC OR ABS SERVICE LINE MINIMUM SLOPE 1/8" PER FOOT FURNISHED & INSTALLED BY THE PROPERTY OWNER

NOTE: WHEN REQUIRED, COUPLINGS SHALL BE SOLID-SLEEVE OR NON-SHEAR COUPLINGS APPROVED BY THE BOROUGH

6" SDR 35 TO SCH. 40 PVC/DWV COUPLING

CONCRETE CRADLE

6" X 4" CONCENTRIC REDUCER COUPLING

4" SCH. 40 PVC/DWV U-TRAP

2B CRUSHED LIMESTONE BEDDING AND BACKFILL - 6" UNDER PIPE, 4" IN PIPE ZONE, 6" ABOVE PIPE. TOTAL LIMESTONE DEPTH = 16" (TYP.)

4" SCH. 40 PVC/DWV SANITARY TEE (TY)

4" SCH. 40 PVC/ABS CLEANOUT, (TYPICAL EVERY 100 FEET)

4" SCH. 40 PVC/ABS CLEANOUT, (TYPICAL EVERY 100 FEET)

4" SCH. 40 PVC/ABS SANITARY TEE (TY)

4" SCH. 40 PVC/DWV SANITARY TEE (TY)

4" SCH. 40 PVC/ABS CLEANOUT, (TYPICAL EVERY 100 FEET)

4" SCH. 40 PVC/ABS VENT LINE

3' WHERE PRACTICAL

4" MINIMUM COVER

4"

WATERTIGHT CAP

EXISTING GROUND

EXISTING SURFACE

CONCRETE PAD 12" MIN. AROUND CASTING

8" SMOOTH-LINED CORRUGATED P.E. PIPE 18" VERTICAL HEIGHT

2B LIMESTONE BACKFILL

6" SCH. 40 DWV INSPECTION PORT

6" SCH. 40 DWV TWO WAY CLEANOUT

6" LATERAL

ROUGH'S SANITARY SEWER IN LINE

ND OF 6" BOROUGH'S SERVICE LINE NEAR PROPERTY LINE OR RIGHT-OF-WAY LINE

FEMALE ADAPTER W/ THREADED PLUG, 2" RECESSED FLUSH PLUG SQUARE FOR REMOVAL

EAST JORDAN IRON WORKS # 1577 MONUMENT BOX OR EQUAL FRAME CAST IN CONCRETE PAD

WATERTIGHT CAP

VENT THROUGH ROOF

HOUSE

EXTERIOR WALL

ACCESSIBLE CLEAN-OUT

45° BENDS (TYPICAL)

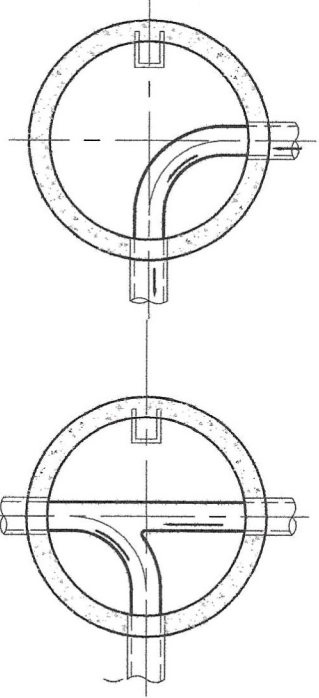
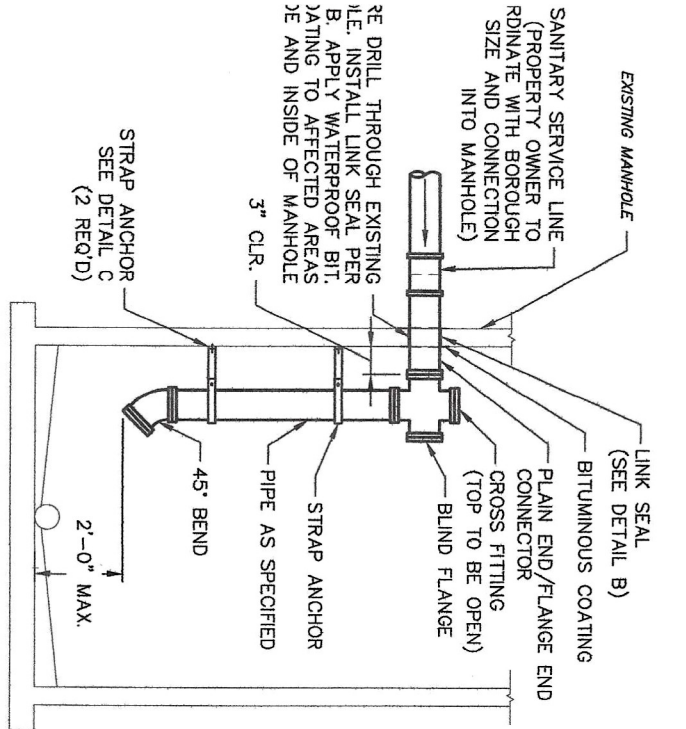
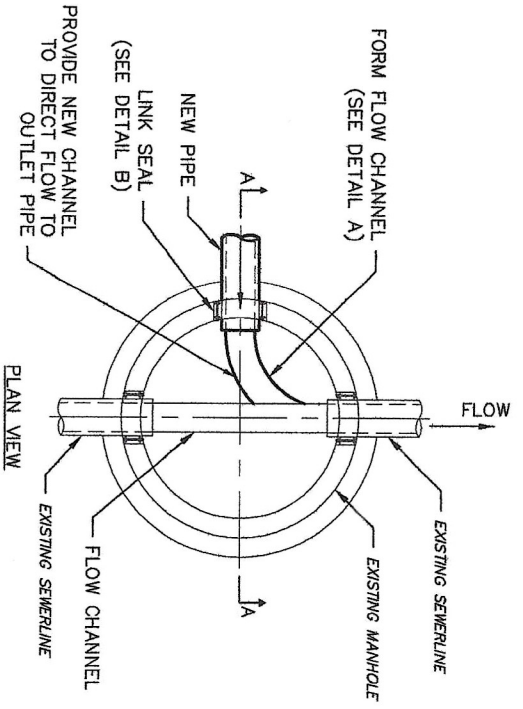
STAINLESS STEEL "SHIELDED" FLEXIBLE COUPLING W/ 4" SS CLAMPS (FOR IRON, STEEL, OR VCP PIPE ONLY)

4" SCH. 40 PVC/ABS VENT LINE

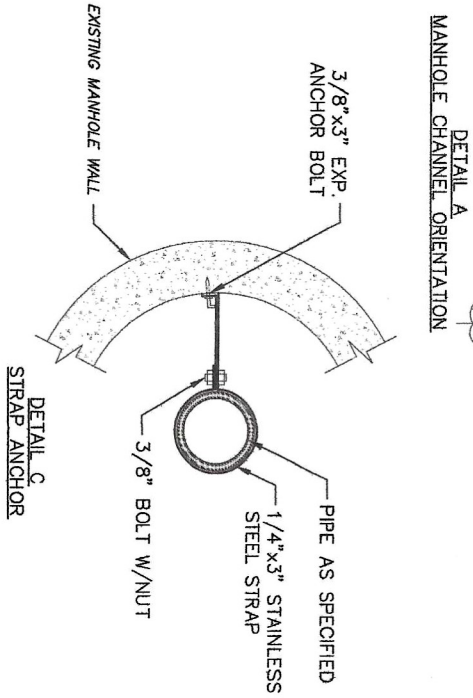
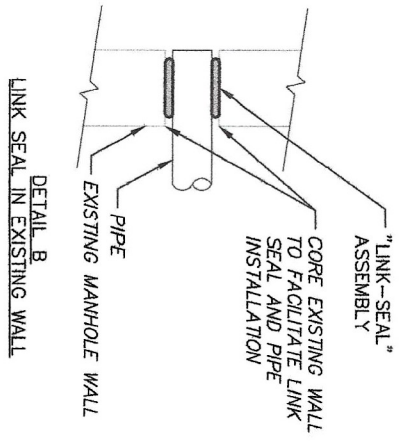
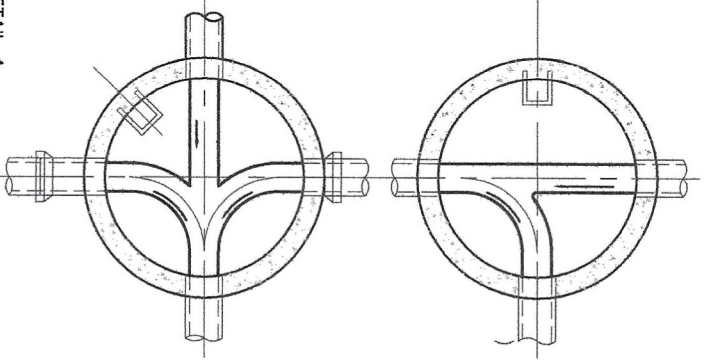
4"

3' WHERE PRACTICAL

WATERTIGHT CAP



- NOTES:
1. SLOPE CONCRETE INVERT 2" PER FOOT OF CHANNEL.
 2. CHANNEL DEPTH TO EQUAL ONE HALF PIPE DIA.
 3. RECONSTRUCT CHANNELS IN EXISTING MANHOLES TO ACCOMMODATE NEW PIPE CONFIGURATIONS.



HARRISVILLE BOROUGH
 117 SOUTH MAIN STREET
 PO BOX 388
 HARRISVILLE, PA 16038
 (724) 735-2222

CONNECTION TO EXISTING MANHOLE

DRAWING NOT TO SCALE
 DRAWN BY: JDH
 DATE: FEB. 2025
 CHECKED BY: ZRS